

## PEARL SYSTEMIC FUNGICIDE

CONTAINS: 200g/L PENCONAZOLE the form of an oil in water emulsion.

Controls Black Spot (Apple Scab and Pear Scab) of Apples and Pears, Powdery Mildew of Apples and Grapes.

Pearl is an advanced formulation of Penconazole as an oil in water emulsion (EW) with twice the active content per litre of other formulations.

The Pearl formulation is well proven and has been the standard overseas for Penconazole more than a decade.

	Current Standard	Pearl
Active Constituent	100 g/L Penconazole	200 g/L Penconazole
Formulation	Emulsifiable Concentrate (EC)	Oil in Water Emulsion (EW)
Resistance Group	Group C Fungicide	Group C Fungicide

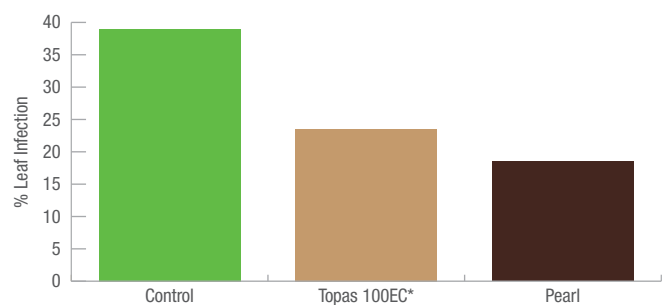
Pearl sets the standard for Powdery Mildew control on Apples and Grapes. Pearl has three modes of activity which ensure it gets to the target:

1. Systemic – moves in the plants green tissue, upwards and out.
2. Translaminar – move across the leaf to protect both upper and lower surfaces.
3. Vapour – has a gas phase which spreads the product within the canopy.

Although Pearl has “kick back” efficacy against Powdery Mildew it is recommended to avoid resistance to this class of chemistry it is only used protectively.

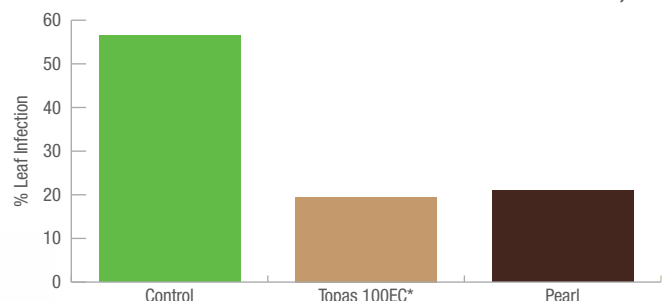


### PROVEN PERFORMANCE UNDER AUSTRALIAN CONDITIONS: POWDERY MILDEW CONTROL ON GRAPES - MCLAREN FLAT, SA



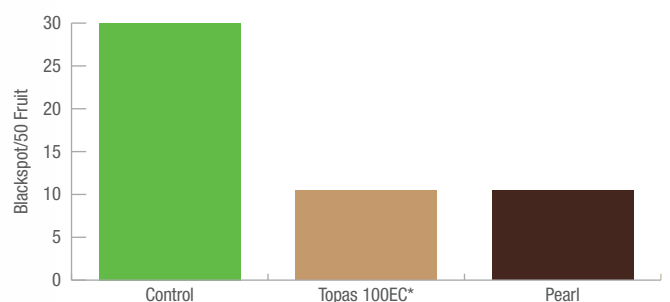
Chardonnay, Wine grape. Researcher – Agrisearch. Mean % leaf infection, 15 days after treatment. 14 Feb 2012. Applied as per label. Treatments with different letters are significant results.

### POWDERY MILDEW CONTROL ON GRAPES - SOMERVILLE, VIC



Chardonnay, Wine grape. Researcher – Agrisearch. Mean % leaf infection, 19 days after treatment. 5 March 2012. Applied as per label. Treatments with different letters are significant results.

### BLACKSPOT CONTROL ON APPLES - OFFICER VICTORIA



Cripps Pink, Apples. Researcher – R and D Solutions. Incidence per 50 fruit. 21 Nov 2012. Applied as per label. Treatments with different letters are significant results.

\*Topas is a registered Trade Mark of Syngenta Group of Companies.

Grochem Australia is a horticultural focused company, focused on delivering advanced solutions to horticultural producers in Australia.

**READ LABEL INSTRUCTIONS FULLY BEFORE USE.**

CROP	DISEASE	RATE	Critical Comments
Apples	Suppression of primary infection and control of secondary infections of powdery mildew ( <i>Podosphaera leucotricha</i> )	<b>Dilute Spraying:</b> 10-12.5 ml/100L water <b>Concentrate spraying:</b> Refer to the Application section	Apply by dilute or concentrate spraying equipment. Apply the same amount of product to the target crop whether applying this product by dilute or concentrate spraying methods. Apply 10 days after spurburst at approximately the pink stage (late September/early October). Repeat 4 to 5 times at 10 to 14 day intervals. Susceptible varieties may need further sprays. Apply no more than 8 applications of PEARL Systemic Fungicide per season. Dilute Spraying: Use the higher rate for spraying of trees heavily infected with Powdery Mildew or under conditions most favourable for the disease. Concentrate Spraying: Use rates towards the higher end of the range on heavily infected trees and when conditions are favourable to mildew development. Care should be taken at the ends of rows, on headlands or at other places where a tree might receive more than the normal dose of fungicide as rates higher than recommended may cause damage to fruit and reduce fruit size.
Apples, Pears	Protective and curative control of Apple Scab or Black Spot ( <i>Venturia inaequalis</i> ) and Pear Scab ( <i>Venturia pirina</i> )	<b>Dilute Spraying:</b> 12.5 mL/100 L water + full recommended rate (tank mix) of a registered protectant scab fungicide <b>Concentrate spraying:</b> Refer to the Application section	Apply by dilute or concentrate spraying equipment. Apply the same amount of product to the target crop whether applying this product by dilute or concentrate spraying methods. This use is subject to a CropLife anti-resistance strategy. To prevent or delay onset of resistance to Group 3 fungicides, DO NOT apply more than four Group 3 sprays alone per season. If more sprays are required, apply a tank mix of a Group 3 with a Group 9 or suitable product from Groups M or M1 to M9. DO NOT apply more than 5 sprays per season of products containing a combination of a Group 3 and a Group 9 fungicide. Commence spraying at green tip with an approved fungicide, then apply a tank mixture of PEARL Systemic Fungicide + registered protectant scab fungicide at spurburst. Repeat applications at 7 to 10 day intervals until the end of October, then apply at 14 to 21 day intervals as required, depending on weather conditions and disease incidence. When conditions are likely to have produced an infection period for Apple or Pear Scab or when spore warning service indicates that an infection period has occurred, apply the tank mixture of PEARL Systemic Fungicide + registered protectant Scab fungicide within 4 days to achieve a curative result. Care should be taken at the ends of rows, on headlands or at other places where a tree might receive more than the normal dose of fungicide as rates higher than recommended may cause damage to fruit and reduce fruit size.
Grapes	Powdery Mildew ( <i>Uncinula necator</i> )	<b>Dilute Spraying:</b> 6.25 mL /100 L water <b>Concentrate spraying:</b> Refer to the Application section	Apply by dilute or concentrate spraying equipment. Apply the same amount of product to the target crop whether applying this product by dilute or concentrate spraying methods. This use is subject to a CropLife anti-resistance strategy. Apply before the development of disease when shoots are approximately 20 cm long. Apply 2 further treatments at 14 to 21 day intervals. DO NOT apply more than two consecutive sprays of Pearl Systemic Fungicide. DO NOT apply more than three applications of PEARL Systemic Fungicide per season. DO NOT use Pearl or other Group 3 fungicides curatively. Use a registered fungicide with a different mode of action if further applications are required.

**NOT TO BE USED FOR ANY PURPOSE, OR IN ANY MANNER, CONTRARY TO THIS LABEL UNLESS AUTHORISED UNDER APPROPRIATE LEGISLATION.**

**APPLES, PEARS, GRAPES:**

Do not harvest for 14 days after application.

For more information, contact your local grochem representative

grochem.com  
for all enquiries 1800 777 068